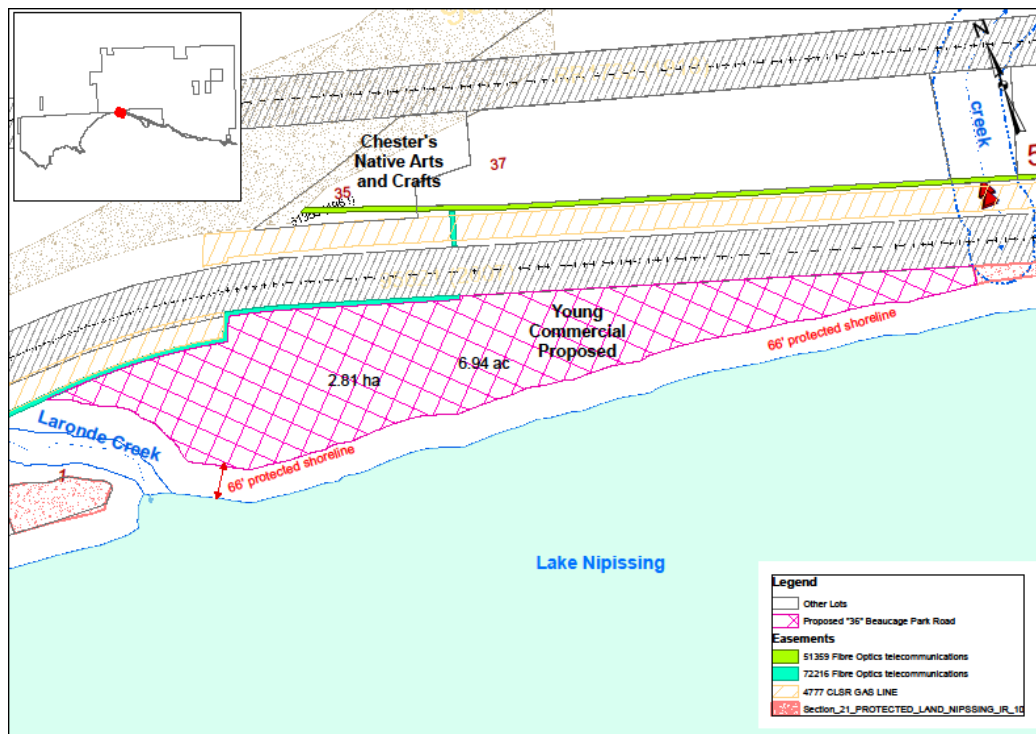


NOTICE TO THE MEMBERSHIP

June 12, 2019 – Nipissing Nation received an application for a Commercial Land Use Permit to place a **day use picnic area** with possible future cabin rentals on Nipissing Nation. The proposed location is south of the CPR and east of Laronde Creek as noted on the key plan set out below.



Proposed DAY USE and PICNIC with future Cabins
"36" Beaucage Park Road
Young Commercial Proposed

Date: 6/5/2019

Should you wish to express any legitimate concerns or valid objections you may have about this proposed **business**, you are to submit them in writing by July 12, 2019 to:

Michael Harney, Economic Development Officer
36 Semo Road, Garden Village, Ontario P2B 3K2

Should you wish to express any legitimate concerns or valid objections you may have about this proposed **land use**, you are to submit them in writing by July 12, 2019 to:

Cathy McLeod, Acting Land Manager
36 Semo Road, Garden Village, Ontario P2B 3K2